



CUSTOM MADE
WETSUIT

Atlan Productions inc.

120 Rotterdam street,
Saint-Augustin-de-Desmaures
(QC) G3A 1T3

www.atlaninc.com



Here are the important points to complete the custom measurements chart :

1. You must use **our chart** to send us your measurements.
 2. Measurements should be taken **without clothing**, either in underwear or swimsuits.
(Other companies ask to take measurements with the clothes people will wear under their suit, which we don't.)
 3. Measurements should be taken in **INCHES**, not cm.
 4. You must indicate your **height and weight**, because there could be a surcharge to the price of the custom made.
 5. You must indicate the **options** you want on your outfit, as this can influence the way you make the pattern.
 6. If possible, send us profile and face **photos**, we don't need to see the face, you can wear tight-fitting clothes.
 7. Here is a **tip**, to take the length of the legs, you can put a ruler perpendicular to the ground at the level of the crotch, this will give you a starting point to take this measurement more easily.
- * You are responsible for the accuracy of the measurements.



INFORMATION

Client's name:

Men

Women Bra size:

Height:

Weight:

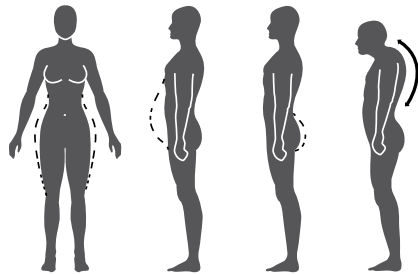
Suit model code:

Color:

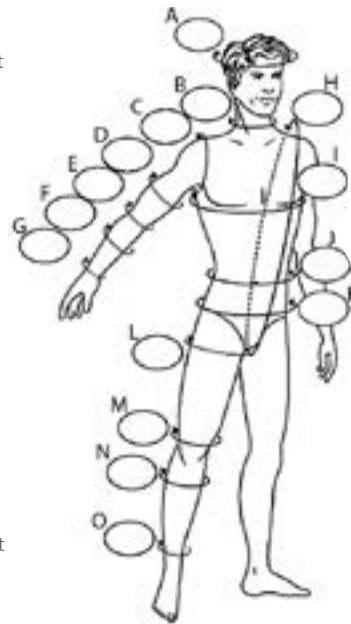
OFF CHART SIZE

When customers have unusual body sizes (e.g. big drops in belly, etc.) please make sure picture without head are attached to the order.

Please check box:



* In the case of atypically shaped size, photos without the head can also be attached to the chart to aid in the development of the pattern.



OPTIONS (Refer to the next page for the description of the options)

Pockets	Zippers	Pads	Other
KP-03	WZ-03	KPV-03	DV-03
UP-03	AZ-03	EP-03	
	FZ-03	SP-03	
	CZ-03	KPV-03	
		PCB-03	

Size and location of pockets, if applicable:

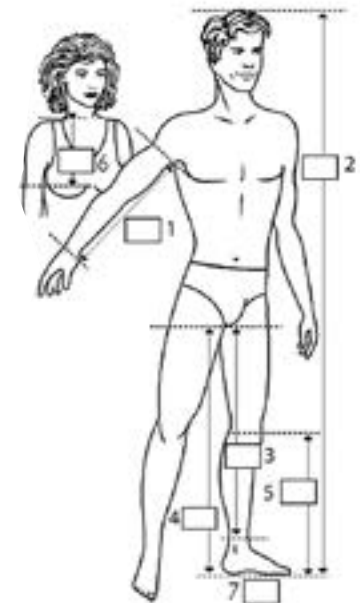
MEASUREMENT

Measurement

- A Around forehead at the biggest
- B Around neck at the smallest point
- C Armpit around shoulder arm at 45°
- D Biceps at the biggest
- E Around elbow at bone
- F Around forearm at the biggest
- G Around wrist just above bone
- H Shoulder to crotch back to shoulder
- I Around chest or bust at the biggest
- J Around waist at the belly button
- K Around hips at butt area
- L Around thigh at crotch level
- M Around knee cap
- N Around calf at biggest
- O Around ankle just above bone

Length measurement

- 1 Arms length from armseam to wrist bone
- 2 Height from head to feet
- 3 Length from crotch to ankle bone
- 4 Length from crotch to floor
- 5 Length from knee to floor
- 6 Length from shoulder bone to bust tip
- 7 Shoe sizes



OPTIONS

Pockets (Specify position)

KP-03 Knife pocket 3"X8" *

UP-03 Utility pocket 6"X8" *

*Pocket size provided if not specified by customer.

Zippers

WZ-03 Wrist zippers

AZ-03 Ankle zippers

FZ-03 Front entry zipper on farmer jane/john

CZ-03 Convenient zipper on farmer jane/john

Pads

KPV-03 Vulcanized knee pads

EP-03 Tuff Tec elbow pads

SP-03 Shoulder pads

KPV-03 Platisoft coating on knees

PCB-03 Platisoft coating on butt area

Other

DV-03 Double velcro entry on farmer jane/john

SURCHARGES FOR CUSTOM MADE COLD AND WARM WATER SUITS

Custom charge 160\$
(irrespective of model)

Men

Between 6'2"- 6'4" **or** 226-300 lb Custom charge + 35% of the price of the suit

Over 6'4" **or** 300 lb Custom charge + 45% of the price of the suit

Over 6'4" **and** 226 lb Custom charge + 60% of the price of the suit

Women

Between 5'10" - 6'1" **or** 180-230 lb Custom charge + 25% of the price of the suit

Over 6'1" **or** 230 lb Custom charge + 40% of the price of the suit

Over 6'1"**and** 180 lb Custom charge + 50% of the price of the suit